

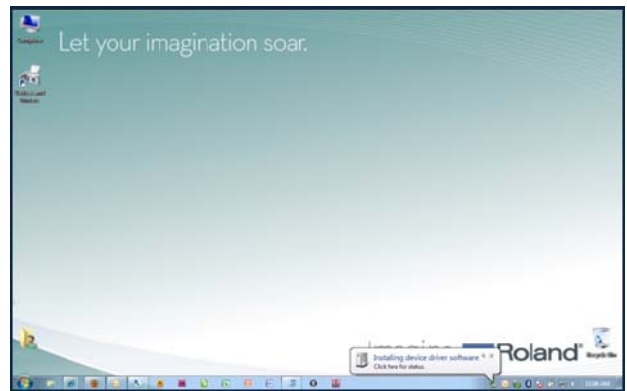
## Window 7 and Windows Vista Installation Guide

This document outlines the procedures for installing the Roland Windows print driver with Windows 7 (32-bit and 64-bit versions) and Windows Vista.

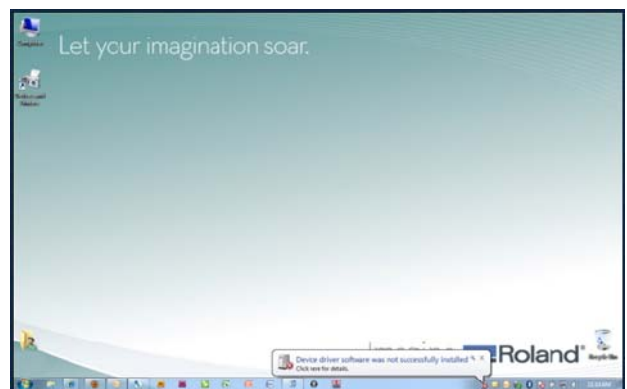
### Windows 7 and Windows Vista driver installation procedures:

1. Ensure that the power is turned off on your Roland USB device and plug it into the USB port.

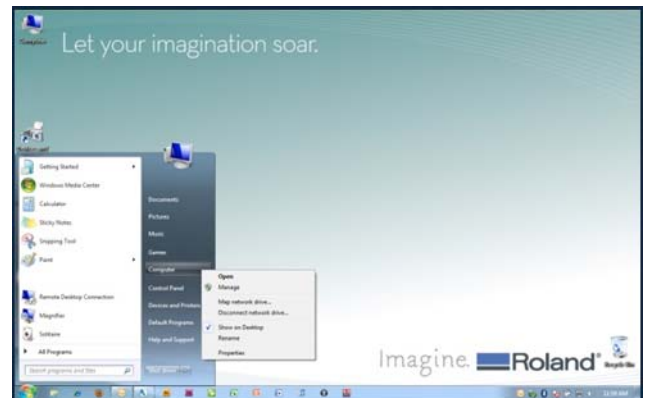
2. Power the Roland device on. Windows will see it as New Hardware and begin the installation process.



3. Once complete you will receive an error that the driver software did not install successfully.



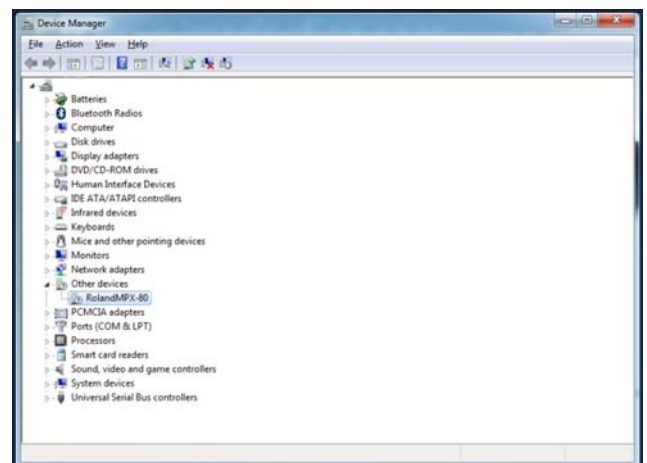
4. Click on Start, right-click on Computer and select Properties.



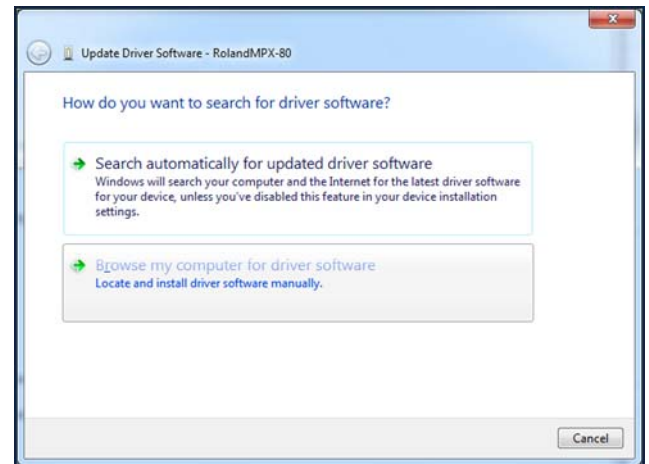
5. Click on the Device Manager.



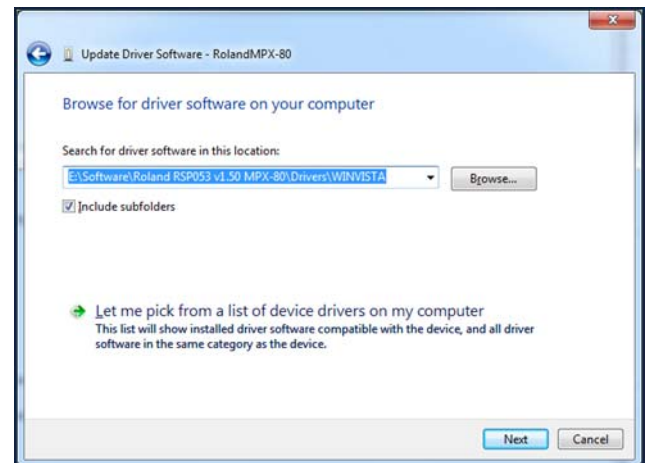
6. Select the Roland device located under Other devices, right click and select Update driver software.



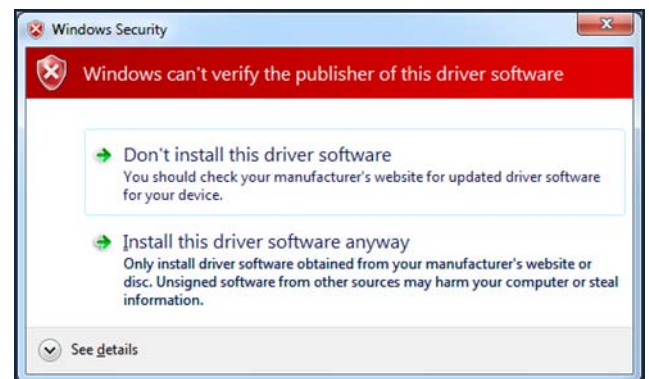
7. Select Browse my computer for driver software.



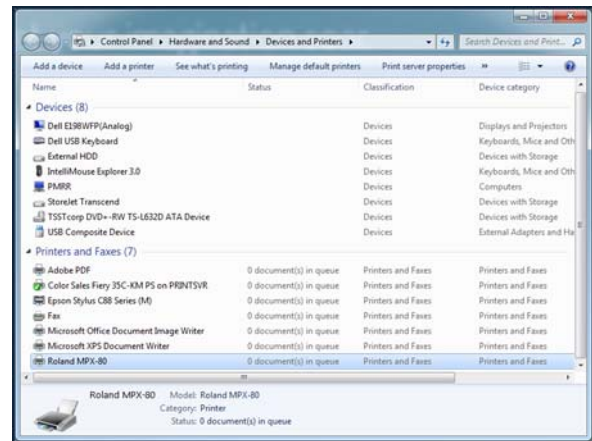
8. Navigate to the Windows Vista driver located on the software CD that came with your product or the downloaded driver from the Roland support site at [www.rolanddga.com](http://www.rolanddga.com).



9. When you get the Windows Security screen, select "Install this driver software anyway". At this point the driver will complete the driver installation and should not give any other errors.



10. To verify that the driver installed properly, click on Start and Devices and Printers. The Roland device should now show up under the list of Printers and Faxes.



11. This completes the driver installation procedure.