

## User's Manual for CoPeck

### What is "CoPeck"?

- "CoPeck" is application software for getting a report of the printer.

### Supported Environment

- Windows 10, Windows 8.1, Windows 7 and Windows Vista

### How to Install

- Execute Setup.exe and follow the wizard instruction.

### How to Uninstall

- Uninstall CoPeck from control panel of windows.

### Supporting Models

- <Type1>
  - ✧ PROII/ProII(V) Series
  - ✧ SP-540V/300V/300
  - ✧ FLJ-300
  - ✧ SJ-1000/1045
- <Type2>
  - ✧ AJ-1000/740/1000i/740i
  - ✧ FP-740
- <Type3>
  - ✧ XC-540/540MT, XJ-740/640/540
  - ✧ VP-540/300/540i/300i
  - ✧ LEC-540/300/330/300A, LEJ-640
  - ✧ RS-640/540
  - ✧ FH-740
  - ✧ XR-640
- <Type4>
  - ✧ SP-540i/300i
  - ✧ VS-640/540/420/300/640i/540i/300i
  - ✧ LEF-300/200/20/12/12i
  - ✧ RA-640, RE-640
- <Type5>
  - ✧ XF-640

- ◇ RF-640
- ◇ RT-640
- ◇ EJ-640
- ◇ XT-640
- ◇ VG-640/540
- ◇ SG-540/300

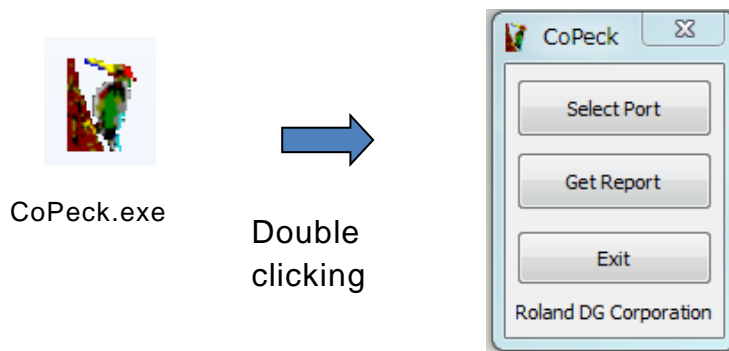
## How to use

### ➤ Preparation for printer

- ◇ Turn on Main Power Switch and Turn off Sub Power Switch. Please be confirmed that there is no printing data transmission between the printer and PC.

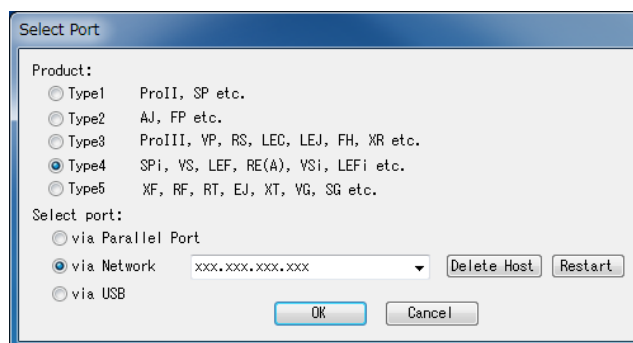
### ➤ Starting CoPeck

- ◇ Double-click CoPeck.exe and you can see the dialog as shown below.



### ➤ Selecting models and connection port

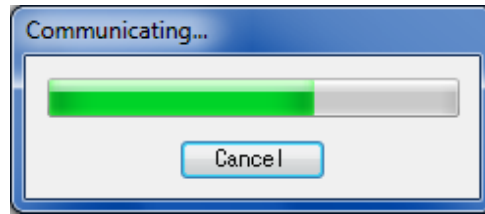
- ◇ Open the [Select Port] dialog by clicking the “Select Port” button. Select the type of the target printer in Product selection. For the details, refer to [Supported Models] in the previous page.



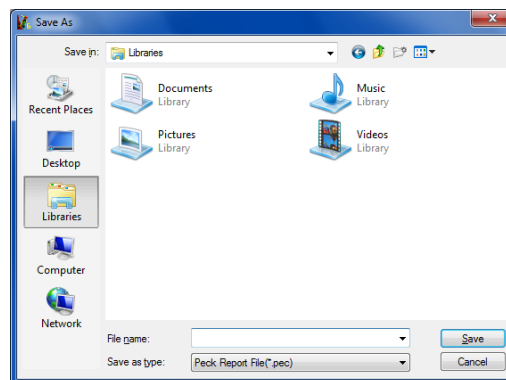
- ◇ Select connection port. If you select [via Network], type in IP Address. Eliminate 0 numbers if the higher digit of IP address is(are) 0(s). (For example, 130.101.091.003 ->

➤ **Getting a report from your printer.**

- ✧ Click the [Get Report] button.

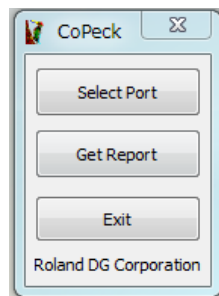


- ✧ Save it as a file.



➤ **Finishing CoPeck.**

- ✧ Finish CoPeck by clicking the [Exit] button.



Version 7.3.0  
January 12<sup>th</sup>, 2017

Imagine.