

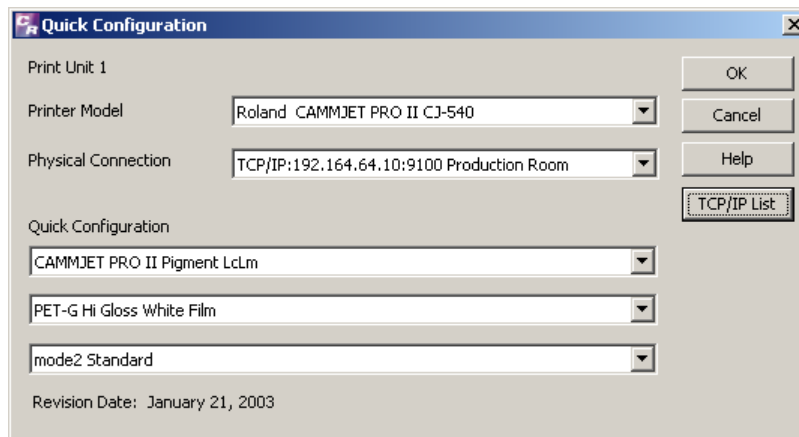
## Print/Laminate/Cut Procedure for COLORIP

There are four distinct workflows possible with COLORIP. They are Print Only, Cut Only and Print/Cut and Print/Laminate/ Cut. This document is meant to walk you step-by-step through the Print/Laminate/Cut workflow.

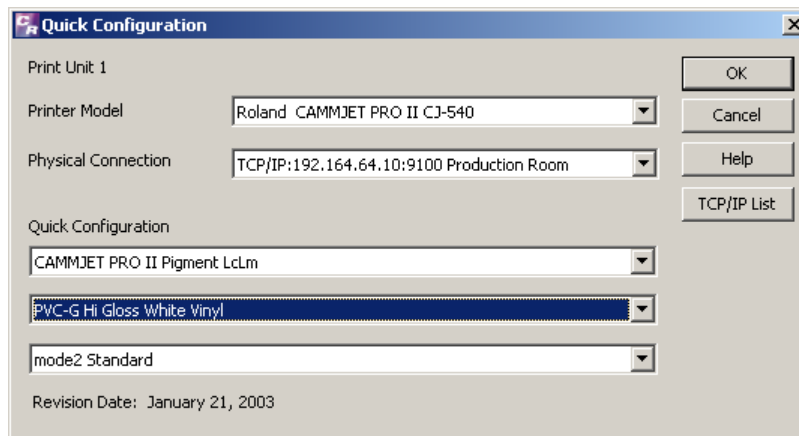
### Quick Configure Settings

Make sure you choose both a Print/Cut inkjet model and cuttable media, otherwise cutting options may not be available. For this example, we chose a Pro II CJ-540 and PVC-G media.

- 1) Click **Configure** in the menu bar to activate the **Quick Configuration**.
- 2) Select a Print/Cut inkjet model, the “Roland CAMMJET PRO II CJ-540” for example.



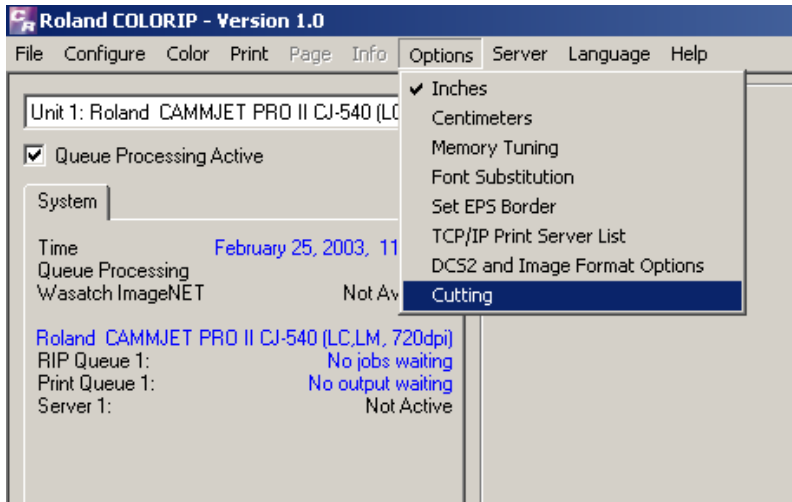
- 3) Select a cuttable media, the “PVC-G Hi Gloss White Vinyl” for example.



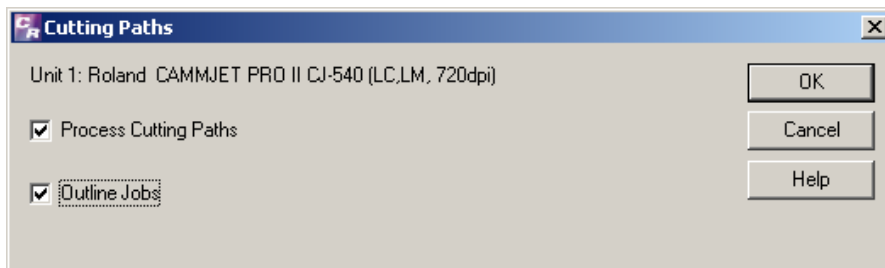
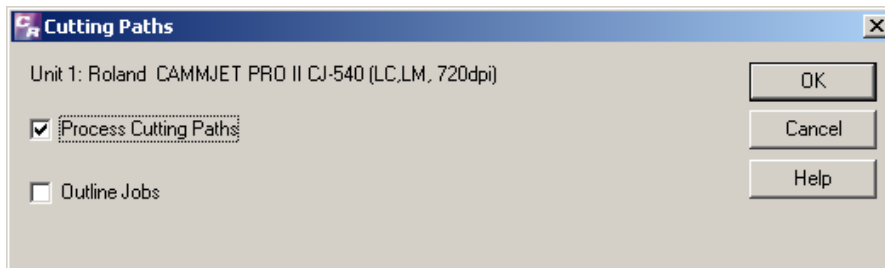
## Enable Cutting Paths

Cutting data can be generated in popular design software such as CorelDraw, Illustrator and QuarkXPress. For help on how to specify cut data, please refer to the Cutting Section of Roland COLORIP's Online Help. Outline cutting data can also be generated by COLORIP. If you activate the "Outline Jobs" option, COLORIP can automatically create a rectangular cut around the edge of your print job.

- 1) Select **Options>Cutting** from the file menu.

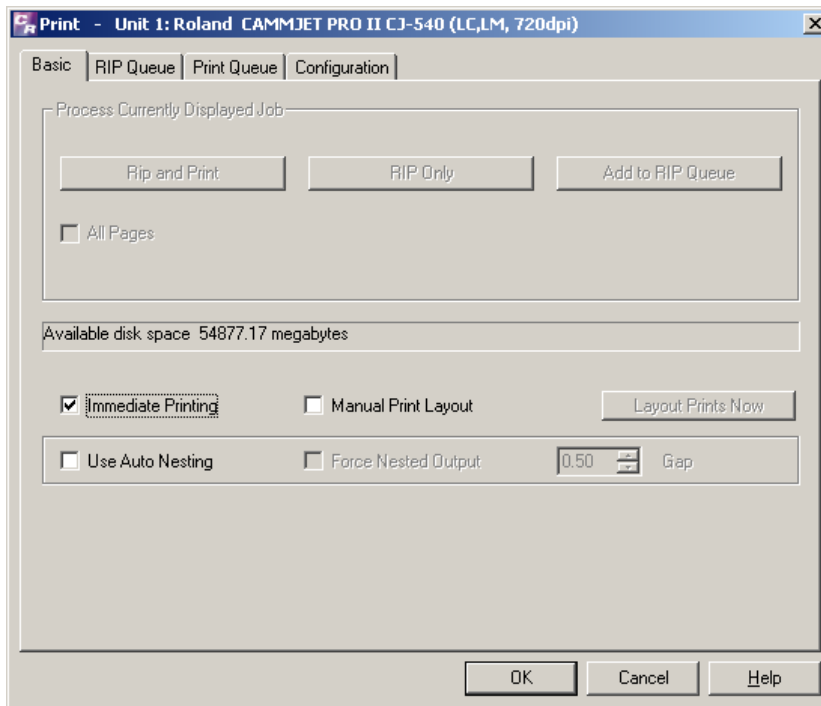


- 2) From the **Cutting Paths** dialog box, check "Process Cutting Paths" to enable COLORIP to process your CutPath or CutContour lines. You can also choose to check "Outline Jobs".



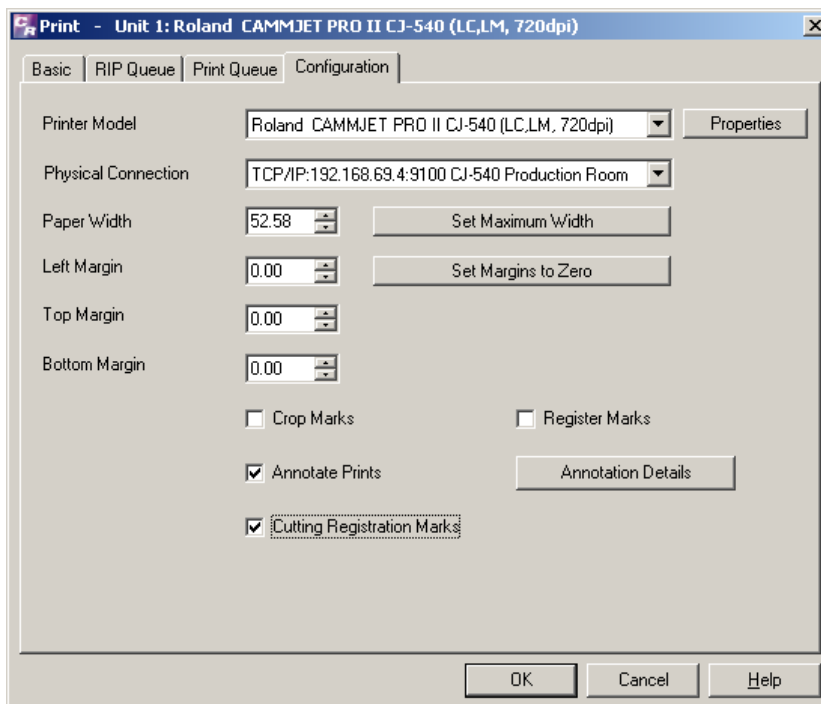
## Enable Quadralign

- 1) From the file menu, select **Print** to activate the **Print** dialog box.



- 2) Select the **Configuration** tab and check the “Cutting Configuration Marks” option.

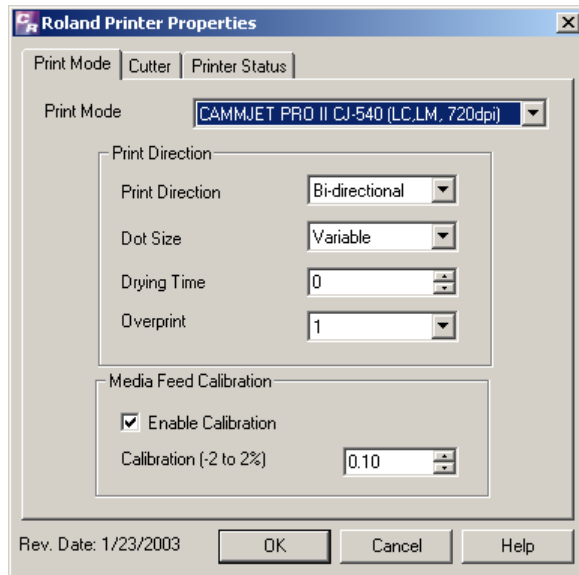
This option will allow COLORIP to print the Quadralign cropmarks.



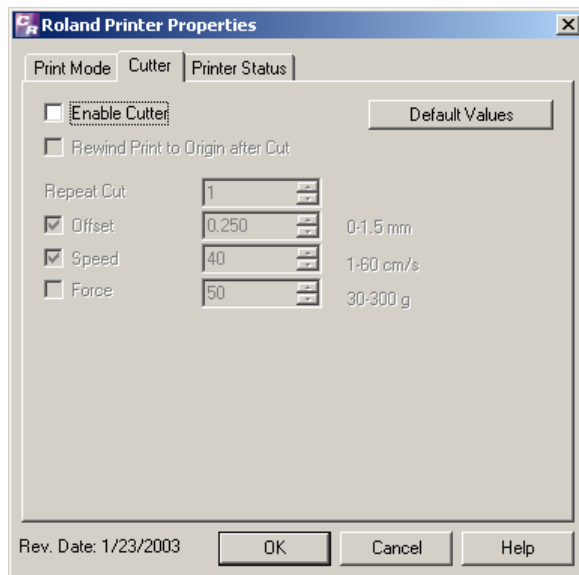
## Temporarily Disable Cutting

Although you have enabled the processing of cutting paths, you must disable COLORIP's cutter capability for this particular job. The steps below will store the cutting data to the Cutting Queue for you to send after lamination or treatment of your print.

- 1) Click on the **Properties** button.



- 2) Click on the **Cutter Tab** and uncheck "Enable Cutter".

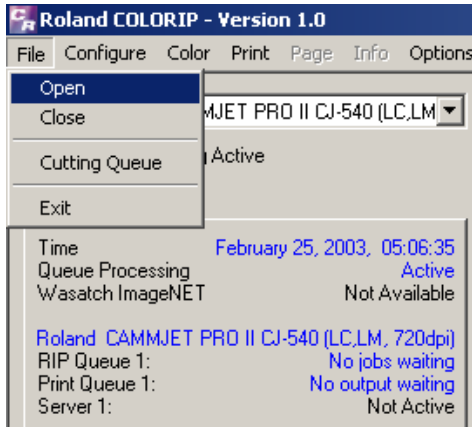


- 3) Click **OK** to save changes.

## Open, Rip and Print the File

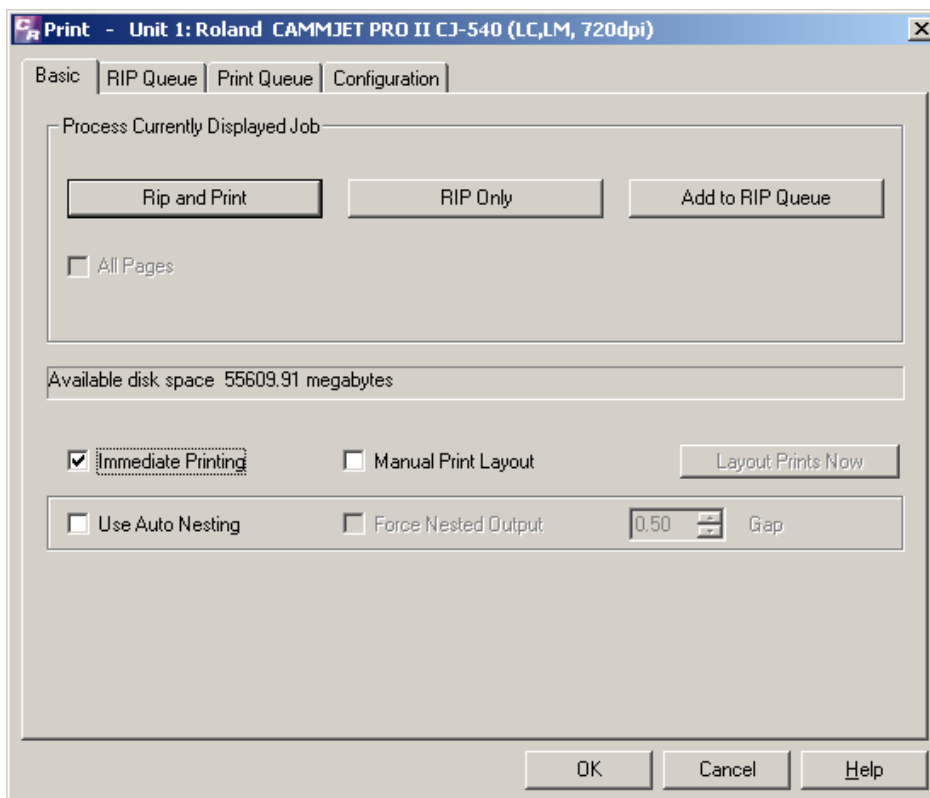
- 1) Click **File>Open** in the menu bar and locate your print/cut file.

Notice the dotted lines that signify where your cutting data.



- 2) Click on **Print** in the menu bar to activate the **Print Dialog Box**.

If you do not wish nest or perform manual layout, then check “Immediate Printing”.



- 3) Click **OK**. Your file will now rip and print with Quadralign cropmarks, but without performing any cutting.

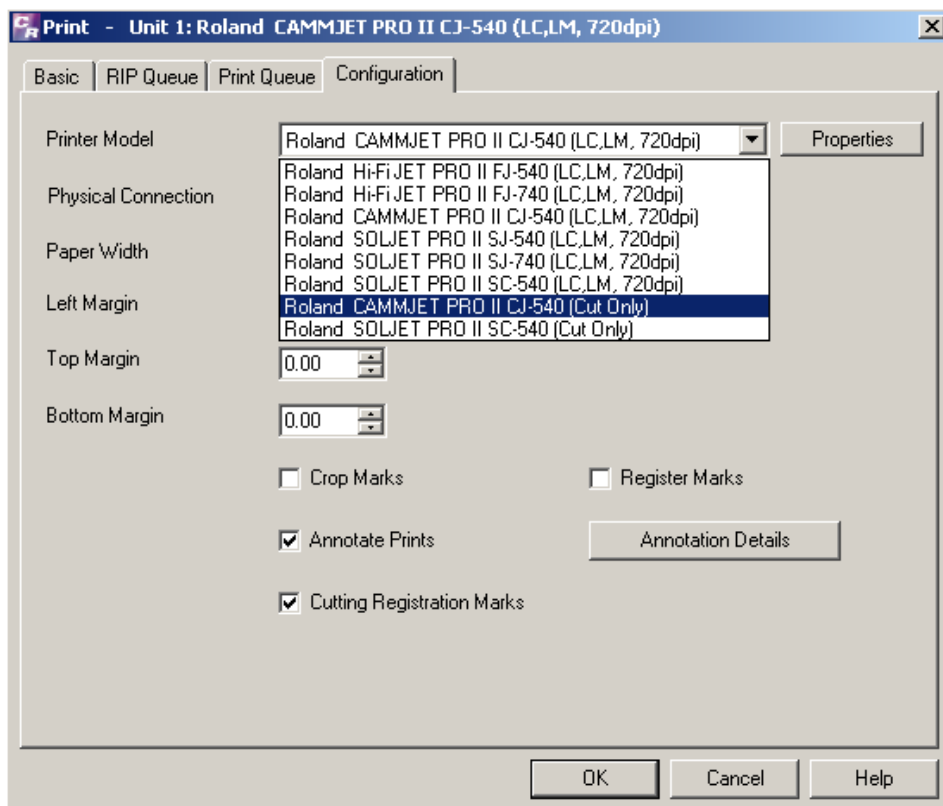
## Laminate and Reload your Print

After laminating or treating your print, reload the media and perform the Quadralign registration on your printer. For directions to automatically or manually re-align your print, please refer to Chapter 2-7 of your printer's user manual.

### (Cut Only) Configuration

To properly process the cutting data only, you will have to manually set the configuration to "Cut Only". You cannot use the **Quick Configuration** feature to select this option.

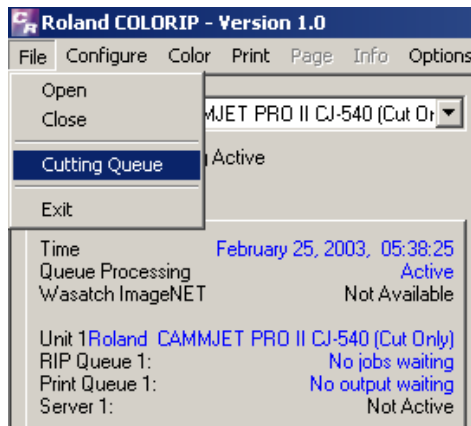
- 1) From the file menu, select **Print** to activate the **Print** dialog box.
- 2) Select the Cut Only option that corresponds to your print, the "Roland CAMMJET PRO II CJ-540 (Cut Only)" for example.



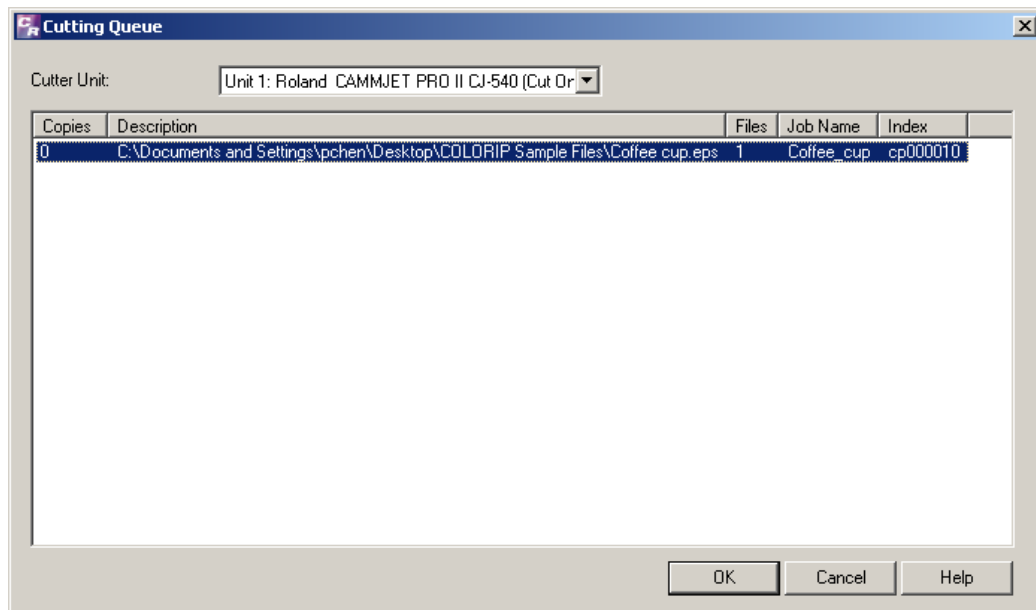
- 3) Click **OK** to save changes.

## Send Cut Data

- 1) Click **File>Cutting Queue** in the menu bar and locate your cutting data.

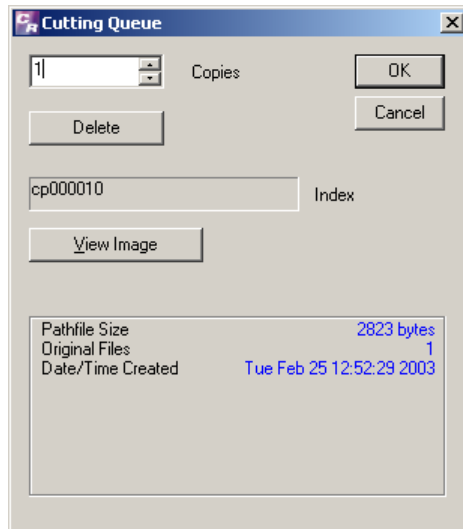


- 2) Double Click on your job's cutting data.



## Send Cut Data (Cont'd)

- 3) Change the number of copies from “0” to “1” and click the **OK**.



- 4) Click **OK** to send the cut data to your printer.

Your Print/Laminate/Cut print job is now complete.

## Reselect a Printer/Cutter model under Quick Configure

Now that you've completed your Print/Laminate/Cut procedure, you should reset your settings back to where you started.

- 1) Click **Configure** in the menu bar to activate the **Quick Configuration**.
- 2) Reselect a Print/Cut inkjet model, the “Roland CAMMJET PRO II CJ-540” for example.

