

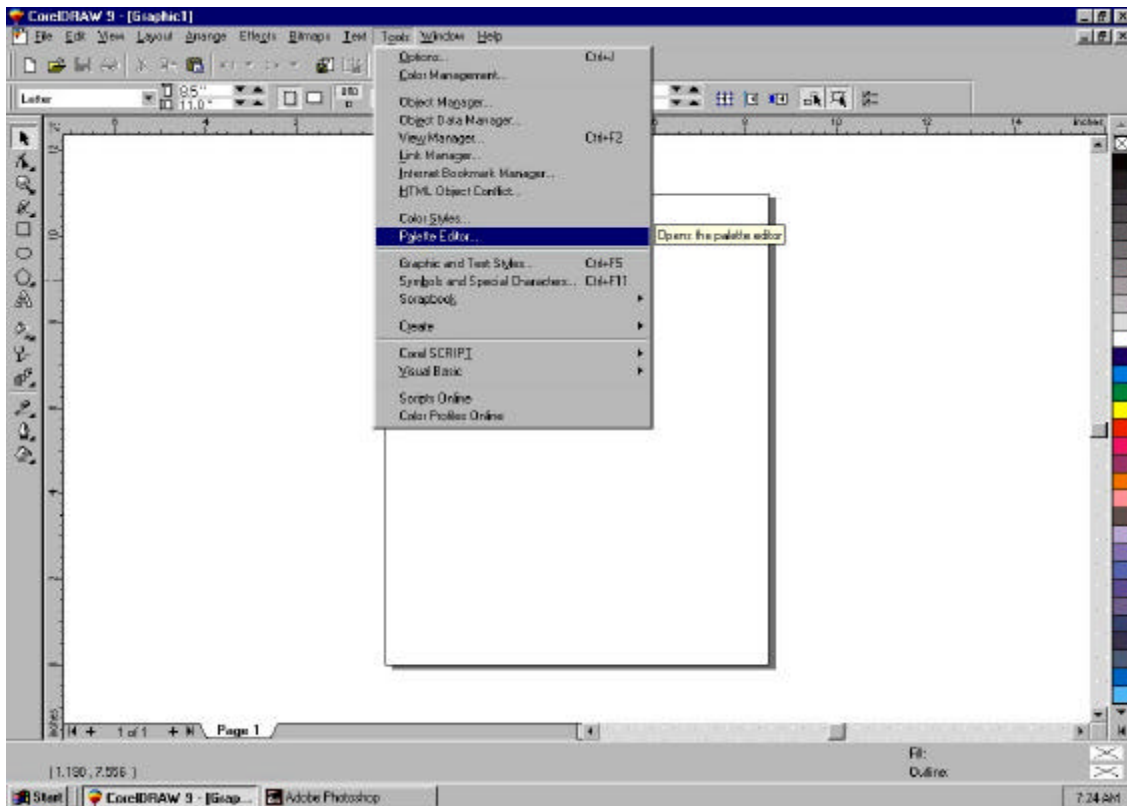
Corel Draw 9.0

Spot Color Printing with PC-600

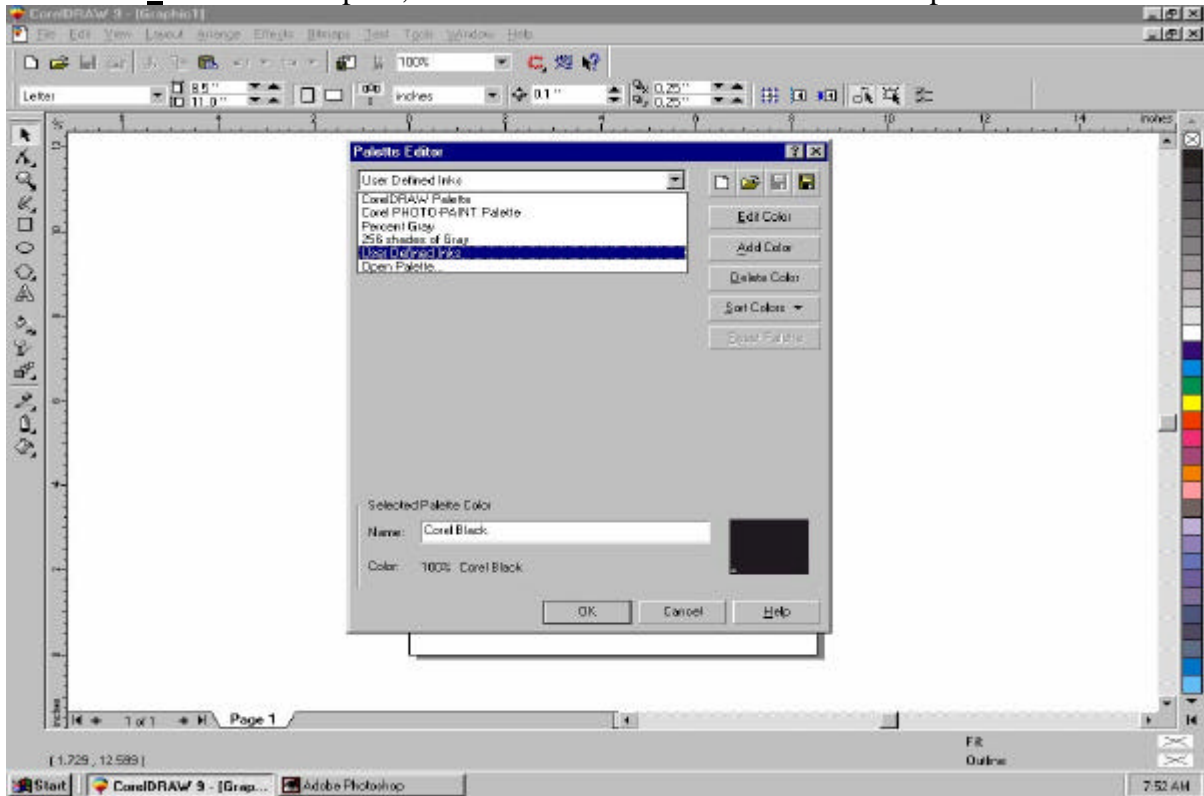
This guide will take you through the steps to add the spot colors and also a CutContour color in order to perform contour cuts.

In order to print the spot colors, you must first create a spot color palette in Corel 9.

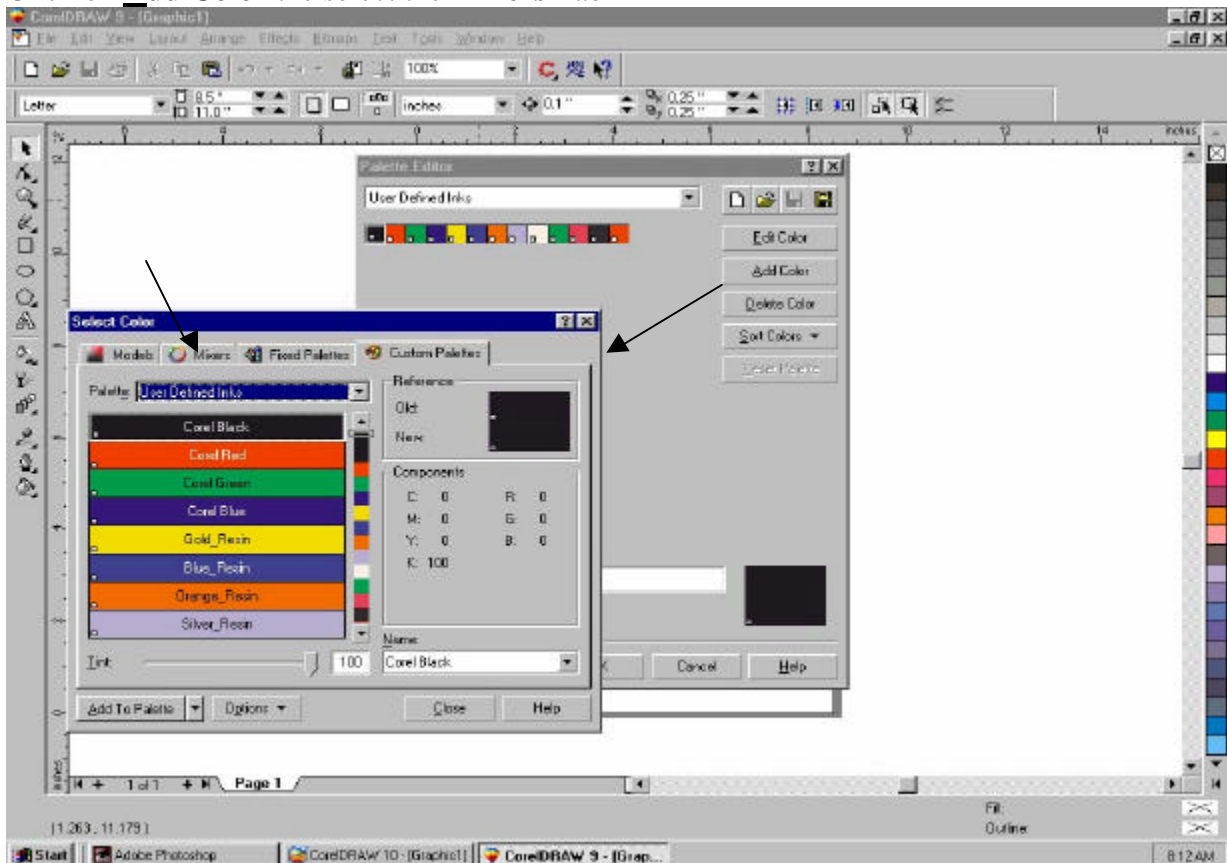
In the Corel Draw Window, select the **T**ools menu and scroll down to and select the **Palette Editor**

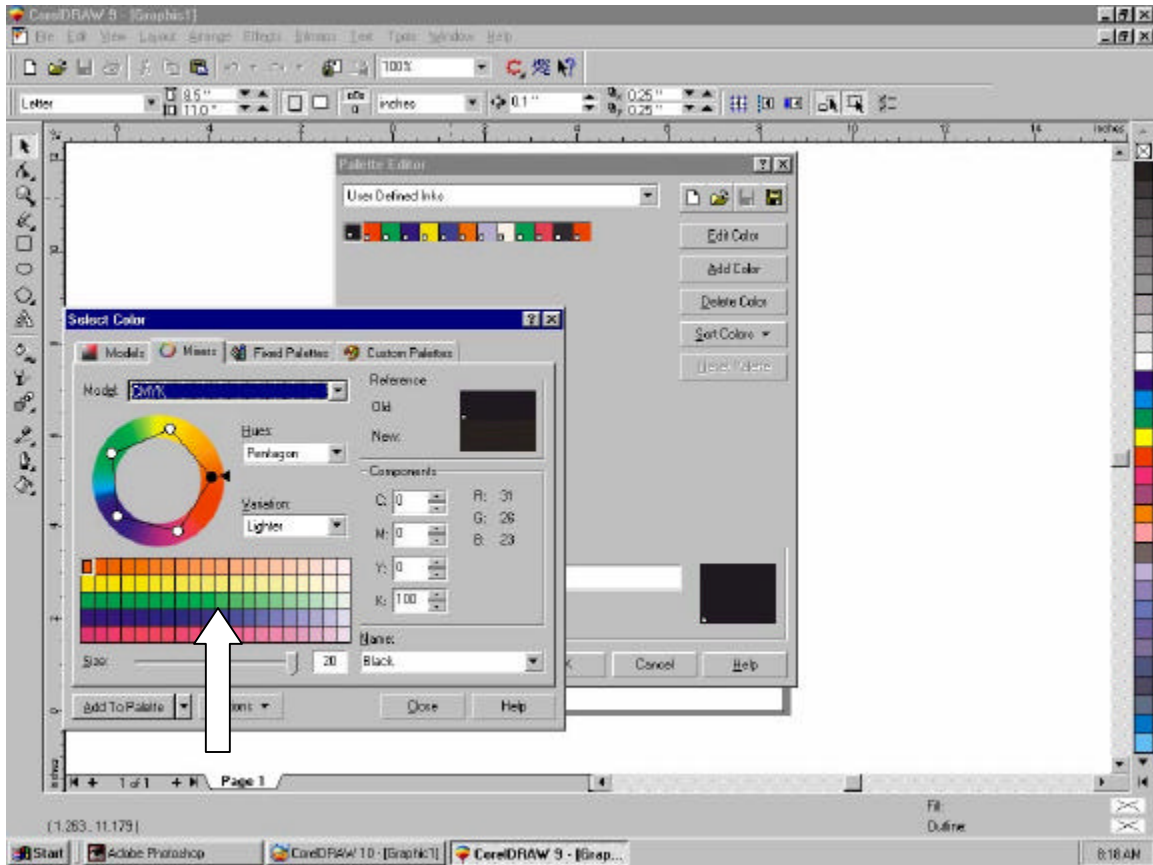


Once the **Palette Editor** opens, select the **User Defined Inks** on the drop down menu.



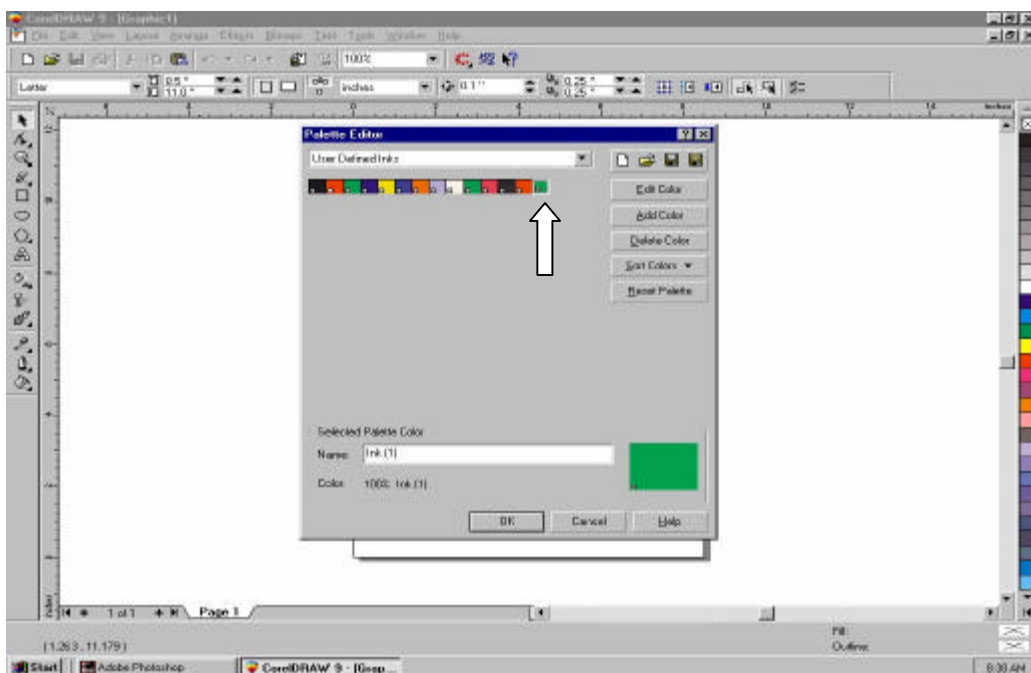
Click on **Add Color** the select the **Mixers** Tab



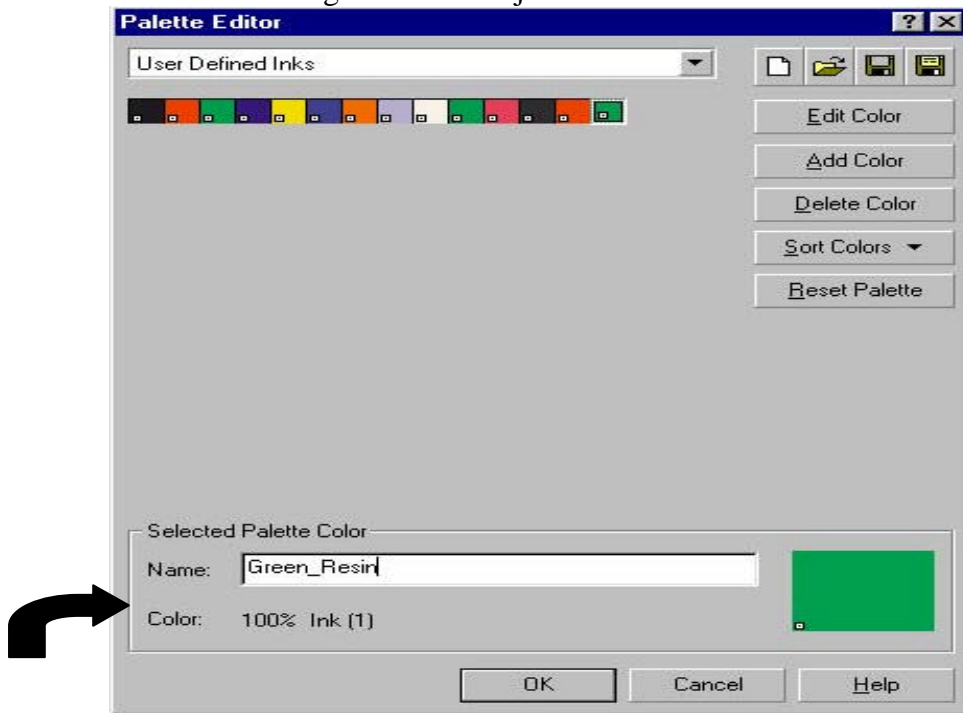


As an example, we will select a color for the green spot color. Move you mouse over the color grid and pick a green. Then click **Add to Palette**. Close out of Select Color.

Notice how it added the green color we selected in the **User Defined Inks**.



Select the color green that was just added and name the color **Green_Resin**.



Now, when you are ready to print, just select the User Defined Inks Palette and select the colors you add, to achieve spot color printing.

It is very important that you add the underscore and the word Resin at the end of the color you are choosing. (*Example: Green_Resin*) The Roland Color Choice Software recognizes the name, not the color, so if the color is not exact, do not worry. The first letter of the color needs to be capital and the “R” on Resin needs to be capital.

If you are experiencing problems, there is one more setting in Corel 9 that you can check.

Select **Tools > Color Management**

Make sure you uncheck “Calibrate colors for display”