

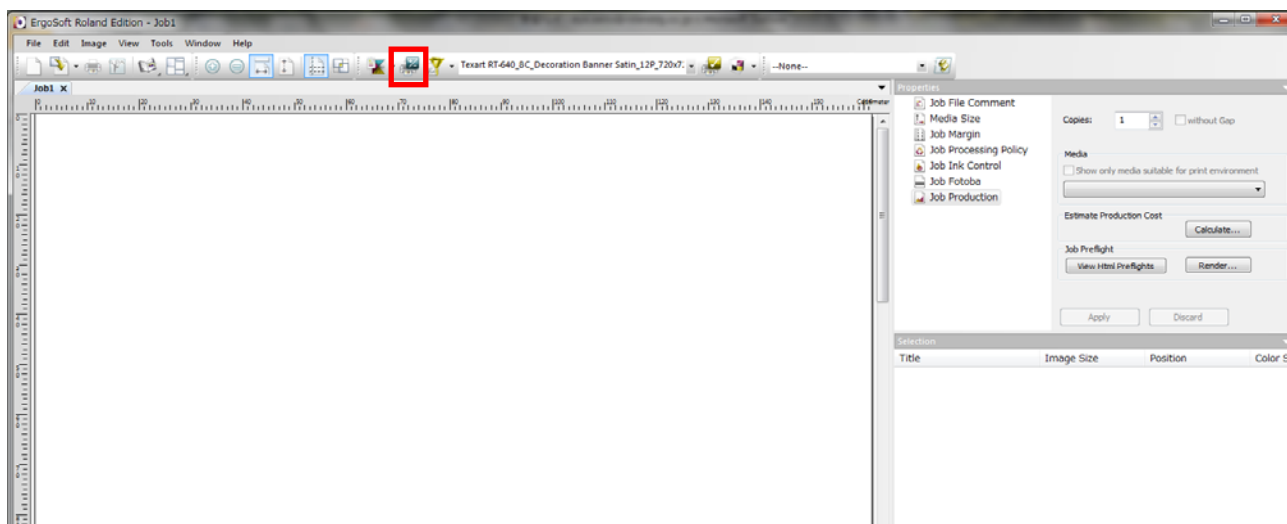
How to add 1 pass mode for the Texart RT-640 and XT-640

Note:

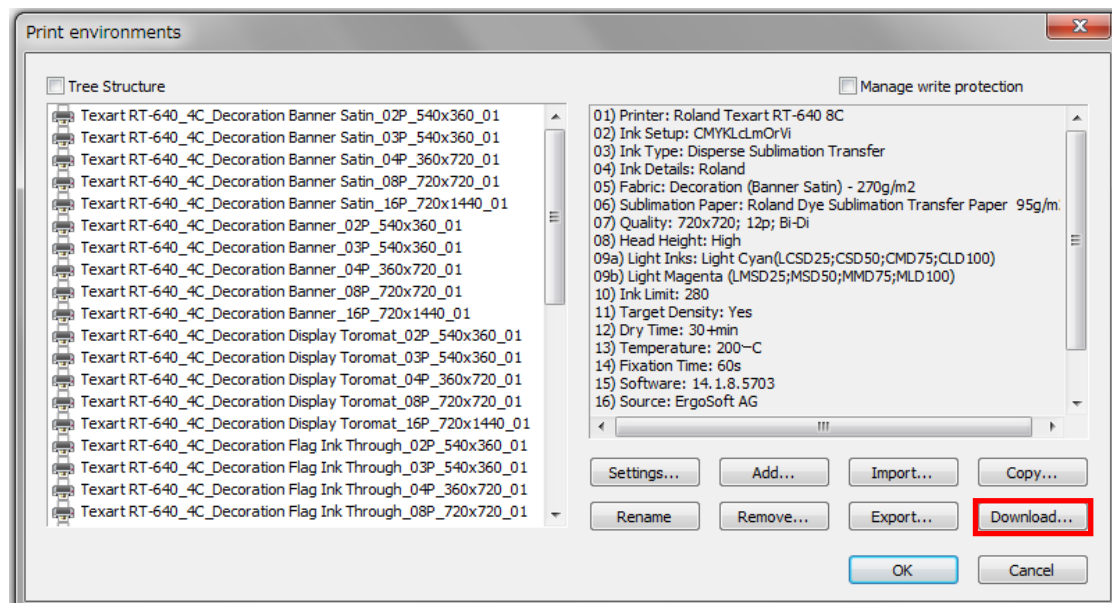
- ✧ When using one pass mode, you may experience banding or offset issues depending on printing and environmental conditions. Please conduct test printing in advance to check your results.
- ✧ 1 pass mode is only available for ErgoSoft Roland Edition.

Procedure:

- 1) Click on the  mark in the red frame.

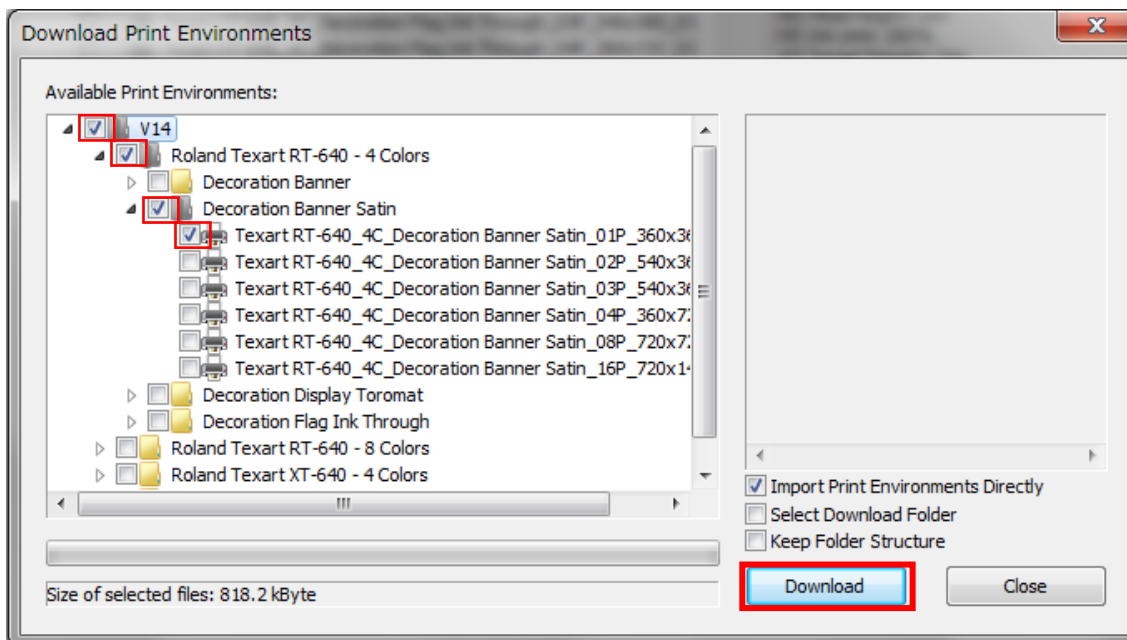


- 2) Click on “download” in the red frame.

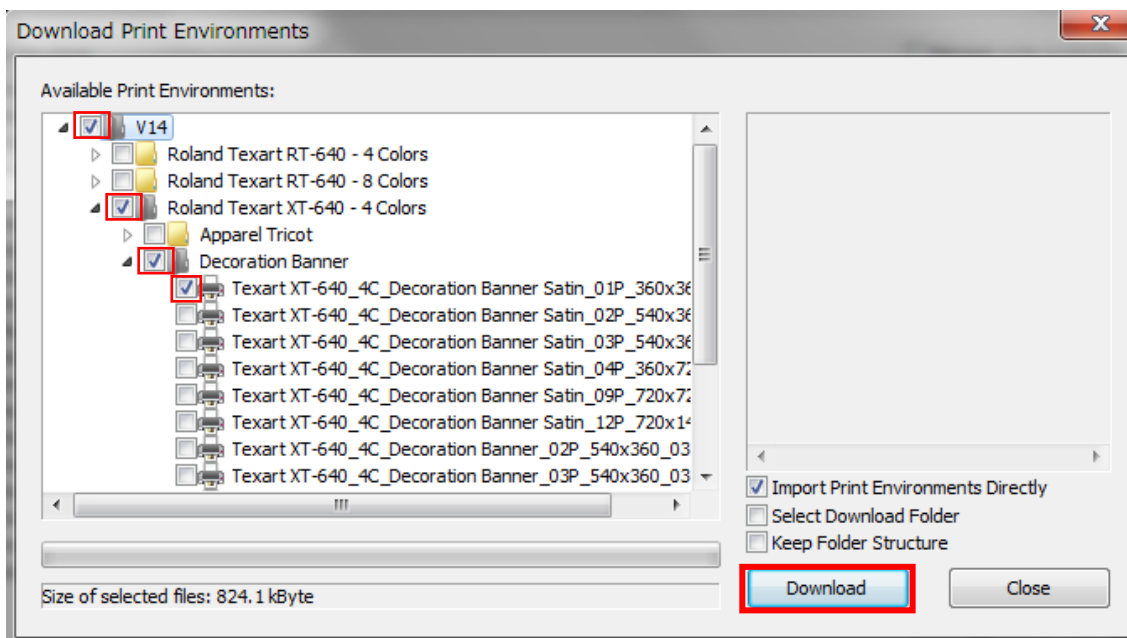


3) You will see the following screen when opening the tree. Place “check mark” as below and click on “download” in the red frame.

<<For RT-640 customers>>



<<For XT-640 customers>>



4) You are now able to add 1 pass mode.